



## Predator Travelers™ v1.3 – What's New

*Latest features and benefits in v1.3*

---

### Before Installing v1.3

Existing Predator Travelers administrators must read the Travelers Upgrade to 1.3 from v1.2 document before installing v1.3. There are several major changes and your local Predator reseller should be consulted prior to upgrading.

Microsoft Internet Explorer v5.5 or later is required to be installed before installing Predator Travelers v1.3.

Backup everything; especially your Oracle space. Running v1.3 will upgrade the data from v1.2 to v1.3 automatically after the upgrade it will no longer be compatible with v1.2. Predator Travelers will always upgrade the data forward but not backwards.

NOTE: v1.3 does not support Windows 95, existing users must upgrade to a newer Windows version.

---

### Why v1.3?

By design, this release was intended to add support for Microsoft SQL Server. Along the way several new features have been added. Details of the new features are explained throughout this document and the new online help file.

---

### Installing v1.3

One of the biggest changes is a new installation based on Microsoft's Install Services. This technology was introduced in Windows 2000. If you are running Windows 98 or NT v4.0, and Microsoft's Install Services has never been installed, v1.3 will do this automatically at the very beginning. This will require a re-boot prior to completing the installation of Predator Travelers.

NOTE: Windows NT v4.0 service pack 4 or greater is required to be installed prior to installing Predator Travelers v1.3

By default, installation occurs in the \program files\predator software\travelers 1.3\ directory. If you were running v1.2 simply proceed with the installation normally. If you were running a beta version of 1.3, please un-install it prior to installing v1.3. Travelers Administrator v1.3 will upgrade your data from v1.2 or any 1.3 beta to the final release

© 1994 – 2002 Predator Software Inc. All rights reserved.

THIS IS A LIVING DOCUMENT. The information contained in this document represents the current view of Predator Software Inc. on the issues discussed as of the date of publication. Because Predator Software Inc. must respond to changing market conditions, it should not be interpreted to be a commitment on the part of Predator Software Inc., and Predator Software Inc. cannot guarantee the accuracy of any information presented after the date of publication.

---

automatically. If upgrading fails, confirm that read only flag is not set on the MDB file.

With this release we have dropped supporting floppy drive or diskette based installs. All installations must be performed from a CD, CDR, CDRW or DVD drive.

---

### **Network Installations of v1.3**

Another major installation improvement has been made with network installations. By committing to store the product installation on a server, users will enjoy automatic healing of all critical files upon running Predator Travelers. For example, a user accidentally deletes PTrav.exe. Under normal circumstances they would be down and the software would fail to run. With v1.3, when the user double clicks the desktop shortcut, all critical files are checked and if necessary restored from the network server and the software begins to run automatically.

To perform a network installation is to step through the following:

1. Copy the contents of the entire CD to a \predator cd\ or similar directory.
2. Run the setuptravelers.exe from the \predator cd\ directory.

**NOTE:** Should any automatic healing be necessary, Predator Gage Crib will be able to automatically extract the necessary files from the appropriate cab files stored in the \predator cd\ directory. If you install from an actual CD, Predator Travelers will be forced to prompt for the CD.

---

### **What's New in v1.3?**

#### **New! Microsoft SQL Server Support**

Support for Microsoft SQL Server has been added throughout Predator Travelers. In addition, demo mode can also support SQL Server.

#### **Improved! HTML based Online Help**

Updated HTML based, context sensitive, online help details the new features and changes made in v1.3 of Predator Travelers. Refer to the What's New section for v1.3 specifics. Finally, we improved F1 style context sensitive help to works within all reports.

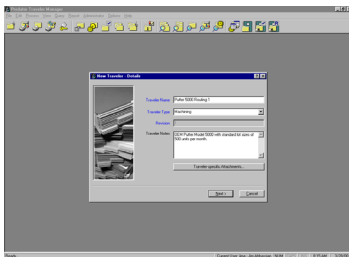
#### **Improved! Installation**

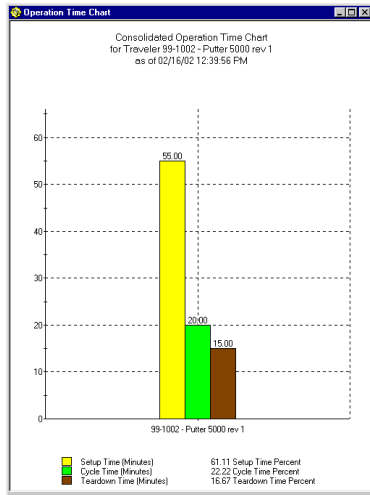
An improved installation and uninstall process is now included with Predator Travelers v1.3. Redundant installation options are automatically skipped with new software detection methods. Finally, the uninstall process for Predator Travelers has been improved so that it does not disturb other Predator applications.

#### **New! Independent Quality Testing**

V1.3 of Predator Travelers was tested by an independent consulting company prior to its release. This additional level of product testing and certification has been made to insure the highest product quality standards have been reached by Predator Travelers.

## **Predator Travelers**





### Improved! Number Formatting

Every major component number including traveler, part, material, gage, tool, cutter, insert and kit number formatting is now optional and can be disabled or enabled. To disable number formatting simply delete the format string within the format string dialog box.

### New! Operation Time Chart

A new operation time chart has been added. This bar chart graphs an individual traveler's setup time, cycle time and tear down time. This chart supports drilling down to each operation along with several other options.

### Improved! Traveler Wizard

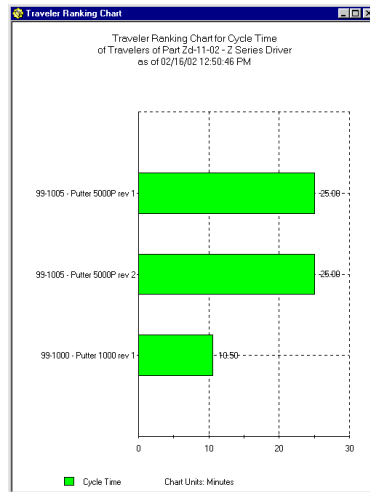
The new traveler wizard has been improved to with an easier to use data entry grid for adding and editing operation details and components per operation. In addition, several new right mouse menus and buttons for adding, editing and deleting have been added.

### New! Compare Travelers Chart

A new compare travelers chart has been added. This bar chart graphs setup time, cycle time and tear down time between any two travelers. This chart supports several other options.

### New! Operations per Traveler Ranking Chart

A new operations traveler ranking chart has been added. This bar chart graphs operations for a specific traveler by one of six criteria. This chart supports several other options.



### New! Traveler Ranking Chart

A new traveler ranking chart has been added. This bar chart graphs travelers for a specific part number by one of six criteria. This chart supports several other options.

### New! Shop Floor Router Report

A new shop floor router report has been added. This report provides a bar code per operation to automatically request a dynamically updated CNC program from Predator PPM or parametric part manufacturing. Predator PPM is an option for Predator DNC or Desktop to be used with Predator Travelers to achieve parametric part manufacturing of prismatic parts without requiring a CAM system.

### New! PPM Preview

A new PPM or parametric part manufacturing preview command has been added to automatically preview the G & M code that will be used for a specific part number and operation. In addition, an automatic link to Predator Virtual CNC allows the final part to be verified, inspected and setup sheet documentation to be generated.

### Improved! Reference Attachments

Adding, editing and deleting reference attachments to travelers, parts, materials, gages, tools, cutters, inserts, kits and every other component has been improved with an all new wizard.

---

### Improved! Edit Operations

The edit operations wizard has been improved to with an easier to use data entry grid for adding and editing operation details. In addition, several new right mouse menus and buttons for adding, editing and deleting have been added.

### Improved! Edit Components per Operations

Editing materials, gages, tools, cutters, inserts, kits and inspections per operation wizards have been improved to with an easier to use data entry grid for adding and editing component details. In addition, several new right mouse menus and buttons for adding, editing and deleting have been added.

### Improved! Kit Numbers

The new and edit kit number wizards have been simplified and improved to be more compatible with Predator Tool Crib. In addition, several new buttons for adding tools, cutters and inserts have been added.

### Improved! View Kit Numbers

Viewing kit numbers has been simplified and improved to be more compatible with Predator Tool Crib.

### Improved! Kit Number Report

The kit number report has been simplified and improved to be more compatible with Predator Tool Crib.



### Improved! Assign Permissions Dialog

Green and Red color coding has been added to the assign permissions dialog. Green indicates that the user/group has permission for a particular item and Red indicates that permission has been disabled.

### Improved! Permissions Report

Green and Red color coding has been added to the permissions report. Green indicates that the user/group has permission for a particular item and Red indicates that permission has been disabled. In addition, A bug has been fixed so the permissions report can now be printed.

### Improved! Upgrading process

The upgrading process has been improved by displaying the database version numbers within the confirmation upgrade dialog box prior to actually upgrading the database.

### Improved! Part Number Wizard

Adding and editing part numbers have been simplified and improved to work with Predator MDC, Tool Crib, and Gage Crib. In addition, the part number wizard has been improved to work with part reference dimensions.

### Improved! Part Reference Dimensions

Adding and editing part reference dimensions have been improved with an all-new wizard, which features an easier to use data entry grid.

---

### **Improved! Traveler Cover Report**

The traveler cover report has been improved by renaming pieces per hour to planned per hour.

### **Improved! Report Dialogs**

Every report has been improved to automatically return to the appropriate dialog box if the query does not return any data.

### **Improved! Status Bar**

The status bar has improved its automatic resizing when the main Travelers window is not maximized.

### **Improved! Predator MDC Compatibility**

Predator Gage Crib v1.3 is compatible with Predator MDC v1.3 and both products can utilize the identical database.

### **Improved! Predator Tool Crib Compatibility**

Predator Gage Crib v1.3 is compatible with Predator Tool Crib v1.3 and both products can utilize the identical database.

### **Improved! Predator Travelers Compatible**

Predator Gage Crib v1.3 is compatible with Predator Travelers v1.3 and both products can utilize the identical database.

### **Improved! PPM Objects**

PPM Objects for Access and Oracle for use within Predator DNC or Desktop have been improved to be compatible with Travelers v1.3. In addition, a new PPM Object for SQL Server has been added.

### **Improved! Traveler Window Size**

Improved the automatic saving of the main Traveler window size when exiting Predator Travelers.

### **Improved! Zinger Example Database**

Updated Zinger example database for v1.3 of Predator Travelers.

### **Bug Fix! Print Entire Traveler**

Fixed a random GPF bug when printing an entire traveler.

### **Bug Fix! View Single Traveler**

Fixed a right mouse bug when editing a operation details from the view single traveler screen.

---

**Bug Fix! View Work Traveler**

Fixed a right mouse bug when switching from a work traveler to a setup traveler.

**Bug Fix! Copy Traveler**

Fixed a bug when copying travelers.

For more information

For the latest information on Predator Travelers, check our web site at  
<http://www.predator-software.com>