



## Predator Tracker™ v3.0 – What's New

*Latest features and benefits in v3.0*

---

### Before Installing v3.0

Existing Predator Tool Crib administrators must read the Tracker Upgrade to 3.0 from Tool or Gage Crib v1.3 document before installing v3.0. There are several major changes and your local Predator reseller should be consulted prior to upgrading.

Microsoft Internet Explorer v5.5 or later is required to be installed before installing Predator Tool Crib v3.0.

Backup everything; especially your Access, SQL or Oracle database. Running v3.0 will upgrade the data from v1.3 to v3.0 automatically after the upgrade it will no longer be compatible with v1.3. Predator Tracker will always upgrade the data forward but not backwards.

NOTE: v3.0 does not support Windows 95, existing users must upgrade to a newer Windows version.

---

### Why v3.0?

By design, this release was intended to merge Predator Tool Crib and Predator Gage Crib into a single application. Along the way several new features have been added. Details of the new features are explained throughout this document and the new online help file.

---

### Installing v3.0

If you are running Windows 98 or NT v4.0, and Microsoft's Install Services has never been installed, v3.0 will do this automatically at the very beginning. This will require a re-boot prior to completing the installation of Predator Tracker.

NOTE: Windows NT v4.0 service pack 4 or greater is required to be installed prior to installing Predator Tracker v3.0

By default, installation occurs in the \program files\predator software\tracker 3.0\ directory. If you were running v1.3 simply proceed with the installation normally. If you were running a beta version of 3.0, please un-install it prior to installing v3.0. Tracker Administrator v3.0 will upgrade your data from v1.3 or any 3.0 beta to the final release automatically. If upgrading fails with Access, confirm that read only flag is not set on the MDB file.

© 1994 – 2004 Predator Software Inc. All rights reserved.

THIS IS A LIVING DOCUMENT. The information contained in this document represents the current view of Predator Software Inc. on the issues discussed as of the date of publication. Because Predator Software Inc. must respond to changing market conditions, it should not be interpreted to be a commitment on the part of Predator Software Inc., and Predator Software Inc. cannot guarantee the accuracy of any information presented after the date of publication.

---

## Network Installations of v3.0

By committing to store the product installation on a server, users will enjoy automatic healing of all critical files upon running Predator Tracker. For example, a user accidentally deletes PTracker.exe. Under normal circumstances they would be down and the software would fail to run. With v3.0, when the user double clicks the desktop shortcut, all critical files are checked and if necessary restored from the network server and the software begins to run automatically.

To perform a network installation is to step through the following:

1. Copy the contents of the entire CD to a \predator cd\ or similar directory.
2. Run the setuptravlers.exe from the \predator cd\ directory.

**NOTE:** Should any automatic healing be necessary, Predator Tracker will be able to automatically extract the necessary files from the appropriate cab files stored in the \predator cd\ directory. If you install from an actual CD, Predator Tracker will be forced to prompt for the CD.

---

## What's New in v3.0?

### New! Integrated Tool and Gage Management

Previously, Predator Tool Crib and Predator Gage Crib were separate products. With the release of Predator Tracker v3.0 all of the functionality is now included in a single product. Maintenance customers that had previously purchased a license for either Tool Crib or Gage Crib receive the additional capabilities with Tracker for free.

NOTE: Customers that do not desire integrated tool and gage management can disable either functionality via permissions.

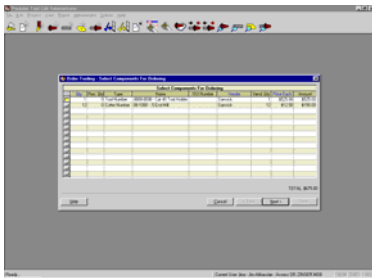
### Improved! HTML based Online Help

Updated HTML based, context sensitive, online help details the new features and changes made in v3.0 of Predator Tracker. Refer to the What's New section for v3.0 specifics.

### New! Predator Tracker API

A comprehensive Tracker API has been developed to simplify integration of Predator Tracker to ERP/MRP/CAD/CAM/PLM/CRM or any 3<sup>rd</sup> party application. Integration with Predator Travelers, MDC, Desktop and DNC to Predator Tracker via a VB scripts or Objects opens up a wealth of automation possibilities. Almost 200 Tracker API calls have been added and these API calls can be used in C++, VB, VB Script and other development environments. Comprehensive online help details these API calls with C++ and VB usage examples are included within the help system.

## Predator Tracker



---

### **New! International Support**

The entire application has been re-designed to support international date formats, international date calculations, and international resources. Internationalization of Predator Tracker includes all menus, dialogs, tooltips, reports and charts.

### **New! Custom Menus**

Custom menus can now be added within Predator Tracker to launch other Predator or 3<sup>rd</sup> party applications.

### **New! Chart Options**

All charts that can return more than ten bars have two new right mouse menus. These new menus are Previous Set and Next Set. These new menus improve the chart display quality while allowing additional information to be easily accessed.

### **New! USB Licensing**

A new option for USB based SIMs has been added to Predator Tracker. This USB option has been added to address the issue of newer PCs that do not support legacy ports.

NOTE: We are still supporting parallel SIMs and will continue to do so.

### **Improved! Licensing**

Licensing has been enhanced to be more flexible with Verisign.

### **New! Tool IRR Number Formatting**

New automatic formatting for tool inspection rejection report numbers have been added. These can be configured to automatically increment using letters or numbers.

### **New! Gage IRR Number Formatting**

New automatic formatting for gage inspection rejection report numbers have been added. These can be configured to automatically increment using letters or numbers.

### **New! Purchase Order Number Formatting**

New automatic formatting for purchase order/request numbers have been added. These can be configured to automatically increment using letters or numbers.

### **New! Part Revision Formatting**

New automatic formatting for part revisions have been added. These can be configured to automatically increment using letters or numbers.

### **New! Integrated Ordering**

Tools, cutters, inserts, kits and gages can now be ordered within a single wizard. In addition, several context sensitive buttons were added to the wizard to duplicate the right mouse menus. Finally, purchase orders now have statuses.

### **New! Edit Purchase Orders**

Purchase orders can now be edited just like components.

### **New! Issue Purchase Orders**

Purchase orders/requests can now be issued. This confirmation procedure of the

ordering process provides a level of control that can be assigned to appropriate personnel via permissions. Often multiple manufacturing personnel can request a purchase but only a select few can issue purchase orders. This new process closer mimics the business rules that are commonly used.

NOTE: Once a purchase order has been issued it can no longer be edited.

**New! View Purchase Orders**

Purchase orders can now be displayed just like components.

**New! Void Purchase Orders**

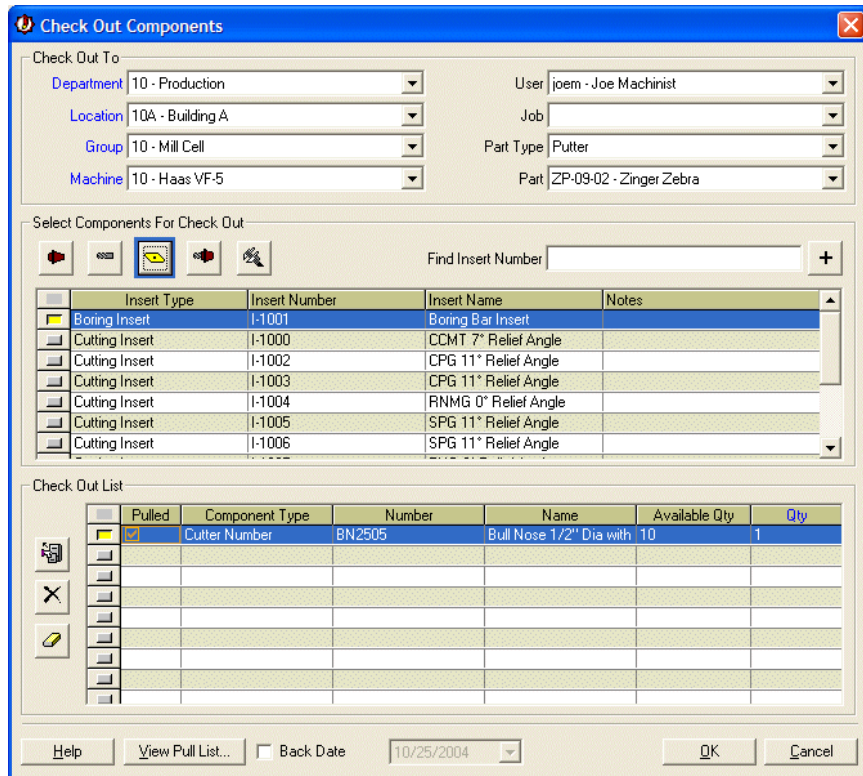
Purchase orders can now be voided.

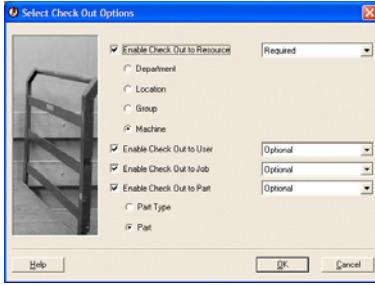
**New! Partial Receives**

Predator Tracker now supports partially receiving an order. Individual quantities can be specified for every line item within an order.

**New! Integrated Check Out**

Tools, cutters, inserts, kits and gages can now be checked out within a single dialog. The check out process has been re-designed to be easier to use for crib attendants, machinists and engineers.





### **New! Check Out Options**

Several new check out options have been added to provide complete flexibility of the process. Check out accountability can be required or optional for department, location, group, machine, user, part type, part number or job number.

### **New! Multiple Monitor Support**

All wizards and dialogs have been improved to support multiple monitor Window's desktops.

### **New! Edit Tool Serial Number**

A new edit tool serial number wizard has been added.

### **New! Edit Gage Serial Number**

A new edit gage serial number wizard has been added.

### **New! Edit Kit Serial Number**

A new edit kit serial number wizard has been added.

### **New! New Tool IRR Wizard**

A new Tool IRR wizard has been added.

### **New! New Gage IRR Wizard**

A new Gage IRR wizard has been added.

### **New! Transfer Kits Wizard**

A new Transfer Kits wizard has been added. This allows checked out kits to be transferred between machines without having to complete a Check In and then a Check Out.

### **New! Tool Number Barcode Report**

A new Tool Number Barcode report has been added.

### **New! Cutter Number Barcode Report**

A new Cutter Number Barcode report has been added.

### **New! Insert Number Barcode Report**

A new Insert Number Barcode report has been added.

### **New! Kit Number Barcode Report**

A new Kit Number Barcode report has been added.

### **New! Gage Number Barcode Report**

A new Gage Number Barcode report has been added.

### **New! Failed Login Report**

A new report has been added called Failed Logins. Tracking failed logins is one of the FDA's security requirements.

### **New! Master Gage Numbers**

A new master gage number option has been added. This option designates master gage numbers that can be used for gage calibration. Calibration operation definitions have been improved to support master gage numbers.

---

### **New! Master Gage Serial Numbers**

Master gage serial numbers has been added. This option designates master gage serial numbers that should only be used for calibration and should not be cheked out for shop floor use.

### **New! Edit Kit Serial Number**

Editing of kit serial numbers has been added. Previously a kit would have to be disassembled and then assembled to be edited.

### **Improved! Assign Permissions**

The assign permissions command has been improved with a true wizard based process with integrated history.

### **Improved! Assign Users to Users Group**

The assign users to users group command has been improved with a true wizard based process with integrated history.

### **Improved! New Components**

Creating new components within Predator Travelers has been improved with a true wizard based process with integrated history. Duplicate components are identified within the wizard making it easier to perform data entry. Multiple components are now easier to add to the system.

**NOTE:** Updated components include departments, locations, groups, machines, part types, part numbers, customers, shifts, vendors, tools, cutters, inserts, kits, and gages.

### **Improved! View Components**

Every view component command has been improved with new right mouse menus for new component and edit existing component.

### **Improved! Edit Components**

Editing existing components within Predator Travelers has been improved with a true wizard based process with integrated history. Duplicate components are identified within the wizard making it easier to perform data entry.

**NOTE:** Updated components include departments, locations, groups, machines, part types, part numbers, customers, shifts, vendors, tools, cutters, inserts, kits, and gages.

**NOTE:** The part type number field has been deleted to standardize it in relation with the other component types.

**NOTE:** We have eliminated the fields for cost per hour and parts per hour from the new and edit wizards from departments, locations and groups. These fields are no longer necessary and have been replaced with the ability to specify standard times per part number per machine.

### **Improved! Customers**

The new and edit customer wizards have been improved to support a notes field per customer. In addition, each customer can have an unlimited number of reference attachments.

---

### Improved! Vendors

The new and edit vendor wizards have been improved to support a notes field per vendors. In addition, each vendor can have an unlimited number of reference attachments.

### Improved! Departments

The new and edit department wizards have been improved to support an unlimited number of reference attachments.

### Improved! Locations

The new and edit location wizards have been improved to support an unlimited number of reference attachments.

### Improved! Groups

The new and edit group wizards have been improved to support an unlimited number of reference attachments.

### Improved! Attachments

All of the attachment wizards have been improved to support in-place edits. In addition, a new button has been added to support URL based attachments.

### Improved! Edit Part Type Wizard

The edit part type wizard has been improved to be easier to use and includes integrated history.

### Improved! Tool Numbers

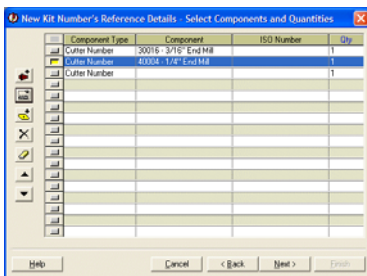
Tool numbers are now more consistent with cutter numbers, insert numbers, and kit numbers by eliminating sub-types.

### Improved! Gage Numbers

Gage numbers are now more consistent with cutter numbers, insert numbers and kit numbers by eliminating sub-types.

### Improved! New Components

All new component wizards have been improved with a new report listing button.



### Improved! New Kit Number

The New Kit Number wizard has been improved with the ability to add new tools, cutters and inserts in the middle of the wizard. In addition, new Delete button has been added.

### Improved! Edit Components

All edit component wizards have been improved with a new report listing button.

### Improved! Inventory Charts

Added total costs and quantities to the Inventory Chart by Value and by Quantity charts.

### Improved! Charts

All charts have been improved to be dynamically resized and centered. In addition, all scrollbars have also been removed.

---

**Improved! Rework Operation Definitions**

The Rework Operation Definitions have been improved to add a Delete All button.

**Improved! Calibration Operation Definitions**

The Calibration Operation Definitions have been improved to add a Delete All button.

**Improved! Menu Structure**

The menu structure has been improved to make Predator Tracker easier to use.

**Improved! Predator MDC Compatibility**

Predator Tracker v3.0 is compatible with Predator MDC v3.0 and both products can utilize the identical database.

**Improved! Predator Travelers Compatible**

Predator Tracker v3.0 is compatible with Predator Travelers v3.0 and both products can utilize the identical database.

For more information

For the latest information on Predator Tracker, check our web site at

<http://www.predator-software.com>