



Predator Tool Crib™ v1.3 – What's New

Latest features and benefits in v1.3

Before Installing v1.3

Existing Predator Tool Crib administrators must read the Tool Crib Upgrade to 1.3 from v1.2 document before installing v1.3. There are several major changes and your local Predator reseller should be consulted prior to upgrading.

Microsoft Internet Explorer v5.5 or later is required to be installed before installing Predator Tool Crib v1.3.

Backup everything; especially your Oracle space. Running v1.3 will upgrade the data from v1.2 to v1.3 automatically after the upgrade it will no longer be compatible with v1.2. Predator Tool Crib will always upgrade the data forward but not backwards.

NOTE: v1.3 does not support Windows 95, existing users must upgrade to a newer Windows version.

Why v1.3?

By design, this release was intended to add support for Microsoft SQL Server. Along the way several new features have been added. Details of the new features are explained throughout this document and the new online help file.

Installing v1.3

One of the biggest changes is a new installation based on Microsoft's Install Services. This technology was introduced in Windows 2000. If you are running Windows 98 or NT v4.0, and Microsoft's Install Services has never been installed, v1.3 will do this automatically at the very beginning. This will require a re-boot prior to completing the installation of Predator Tool Crib.

NOTE: Windows NT v4.0 service pack 4 or greater is required to be installed prior to installing Predator Tool Crib v1.3

By default, installation occurs in the \program files\predator software\Tool crib 1.3\ directory. If you were running v1.2 simply proceed with the installation normally. If you were running a beta version of 1.3, please un-install it prior to installing v1.3. Tool Crib Administrator v1.3 will upgrade your data from v1.2 or any 1.3 beta to the final release

© 1994 – 2002 Predator Software Inc. All rights reserved.

THIS IS A LIVING DOCUMENT. The information contained in this document represents the current view of Predator Software Inc. on the issues discussed as of the date of publication. Because Predator Software Inc. must respond to changing market conditions, it should not be interpreted to be a commitment on the part of Predator Software Inc., and Predator Software Inc. cannot guarantee the accuracy of any information presented after the date of publication.

automatically. If upgrading fails, confirm that read only flag is not set on the MDB file.

With this release we have dropped supporting floppy drive or diskette based installs. All installations must be performed from a CD, CDR, CDRW or DVD drive.

Network Installations of v1.3

Another major installation improvement has been made with network installations. By committing to store the product installation on a server, users will enjoy automatic healing of all critical files upon running Predator Tool Crib. For example, a user accidentally deletes PTool.exe. Under normal circumstances they would be down and the software would fail to run. With v1.3, when the user double clicks the desktop shortcut, all critical files are checked and if necessary restored from the network server and the software begins to run automatically.

To perform a network installation is to step through the following:

1. Copy the contents of the entire CD to a \predator cd\ or similar directory.
2. Run the setuptravlers.exe from the \predator cd\ directory.

NOTE: Should any automatic healing be necessary, Predator Tool Crib will be able to automatically extract the necessary files from the appropriate cab files stored in the \predator cd\ directory. If you install from an actual CD, Predator Tool Crib will be forced to prompt for the CD.

What's New in v1.3?

New! Microsoft SQL Server Support

Support for Microsoft SQL Server has been added throughout Predator Tool Crib. In addition, demo mode can also support SQL Server.

New! Independent Quality Testing

V1.3 of Predator Tool Crib was tested by an independent consulting company prior to its release. This additional level of product testing and certification has been made to insure the highest product quality standards have been reached by Predator Tool Crib.

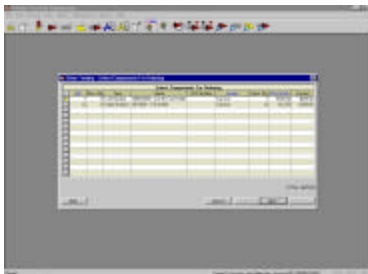
Improved! HTML based Online Help

Updated HTML based, context sensitive, online help details the new features and changes made in v1.3 of Predator Tool Crib. Refer to the What's New section for v1.3 specifics. Finally, we improved F1 style context sensitive help to works within all reports.

Improved! Installation

An improved installation and uninstall process is now included with Predator Tool Crib v1.3. Redundant installation options are automatically skipped with new software detection methods. Finally, the uninstall process for Predator Tool Crib has been improved so that it does not disturb other Predator applications.

Predator Tool Crib

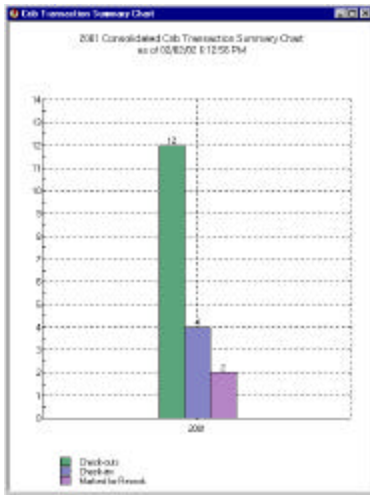


Improved! Tool, Cutter, Insert, Kit, Part and Material Number Formatting

Tool, cutter, insert, kit, part and material number formatting is now optional and can be disabled or enabled. To disable number formatting simply delete the format string within the format string dialog box.

Improved! Rework Queue

The rework queue has been improved to support changes to a tool's rework information when there are tools in the rework queue. In addition, a rework button has been added to the rework queue dialog.



New! Rework Summary Chart

A new rework summary chart has been added. This bar chart graphs pending and completed reworks per day, week, month, quarter or year. This chart supports drilling down along with several other options.

New! Crib Transaction Summary Chart

A new crib transaction summary chart has been added. This bar chart graphs check outs, check ins, and mark for reworks per day, week, month, quarter or year. This chart supports drilling down along with several other options.

New! IRR Summary Chart

A new IRR summary chart has been added. This bar chart graphs open IRRs, quantity scrapped, quantity reworked, and quantity of conditional use per day, week, month, quarter or year. This chart supports drilling down along with several other options.

New! Purchase Order Summary Chart

A new purchase order summary chart has been added. This bar chart graphs issued POs vs received POs per day, week, month, quarter or year. This chart supports drilling down along with several other options.

New! Lost vs. Found Chart

A new lost vs. found chart has been added for tools, cutters and inserts. This bar chart graphs lost vs found quantities per day, week, month, quarter or year. This chart supports drilling down to types and sub-types along with several other options.

New! Active vs. Inactive Chart

A new active vs. inactive chart has been added for tools, cutters and inserts. This bar chart graphs active vs inactive quantities per day, week, month, quarter or year. This chart supports drilling down to types and sub-types along with several other options.

New! Tool Inventory Charts

Three new tool inventory charts have been added for tool types, sub types and numbers. This bar chart graphs tooling costs or quantities per type, sub type or number. This chart supports several filtering options for the crib, the shop floor or for all tools.

New! Cutter Inventory Charts

Two new cutter inventory charts have been added for cutter types and numbers. This bar chart graphs cutter costs or quantities per type or number. This chart supports several

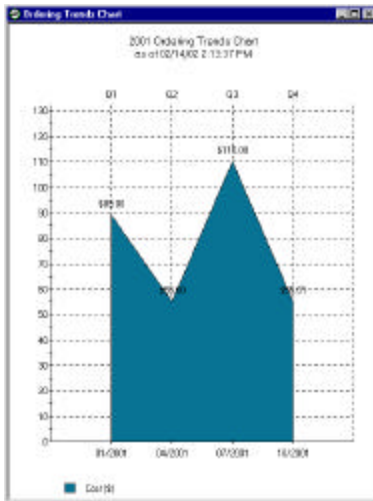
filtering options for the crib, the shop floor or for all cutters.

New! Insert Inventory Charts

Two new insert inventory charts have been added for insert types and numbers. This bar chart graphs insert costs or quantities per type or number. This chart supports several filtering options for the crib, the shop floor or for all inserts.

New! Vendor Purchases Chart

A new vendor purchases chart has been added. This bar chart graphs purchases per vendor within any date range. This chart supports drilling down to a specific vendor.



New! Ordering Trends Chart

A new ordering trends chart has been added for tools, cutters and inserts. This area chart graphs costs or quantities per day, week, month, quarter or year. This chart supports drilling down to types and sub-types along with several other options.

New! Consumption Trends Chart

A new consumption trends chart has been added for tools, cutters and inserts. This area chart graphs costs or quantities per day, week, month, quarter or year. This chart supports drilling down to types and sub-types along with several other options.

New! Periodic Rework Trends Chart

A new periodic rework chart has been added for tools. This plot chart graphs the actual dimension values for the last four reworks.

New! Crib Location Toolbar button

A new crib location toolbar button has been added.

Improved! Reference Attachments

Adding, editing and deleting reference attachments to tools, cutters, inserts, kits and every other component has been improved with an all new wizard.

Improved! Resume Rework Queue

The resume rework queue has been improved to support returning a tool to the rework queue.

Improved! Check In

The check in wizard has been improved with an option to mark a tool for rework during the check in process.

Improved! Add Existing Tool

The add existing tool wizard has been improved with an option to set a default crib location during the data entry process.

Improved! Order New Tooling

The order new tooling wizard has been improved with an option to create new vendors during the ordering process.

Improved! Kit Number

The new and edit kit number wizards have been improved with several new buttons for adding tools, cutters and inserts.



Improved! Assign Permissions Dialog

Green and Red color coding has been added to the assign permissions dialog. Green indicates that the user/group has permission for a particular item and Red indicates that permission has been disabled.

Improved! Permissions Report

Green and Red color coding has been added to the permissions report. Green indicates that the user/group has permission for a particular item and Red indicates that permission has been disabled. In addition, A bug has been fixed so the permissions report can now be printed.

Improved! Upgrading process

The upgrading process has been improved by displaying the database version numbers within the confirmation upgrade dialog box prior to actually upgrading the database.

Improved! Report Dialogs

Every report has been improved to automatically return to the appropriate dialog box if the query does not return any data.

Improved! Status Bar

The status bar has improved it's automatic resizing when the main Tool Crib window is not maximized.

Improved! Cutter and Insert Reports

The cutter and insert current inventory reports have been renamed to list reports. In addition, a new filter dialog has been added to both reports.

Improved! Predator MDC Compatibility

Predator Tool Crib v1.3 is compatible with Predator MDC v1.3 and both products can utilize the identical database.

Improved! Predator Gage Crib Compatibility

Predator Tool Crib v1.3 is compatible with Predator Gage Crib v1.3 and both products can utilize the identical database.

Improved! Predator Travelers Compatible

Predator Tool Crib v1.3 is compatible with Predator Travelers v1.3 and both products can utilize the identical database.

Improved! Zinger Example Database

Updated Zinger example database for v1.3 of Predator Tool Crib.

Bug Fix! Bottom Height

Fixed a bug with the bottom height values not being saved within a cutter number.

Bug Fix! Serial List Report

Fixed a bug when printing the tool serial list report.

Bug Fix! Lost Tool Report

Fixed a bug with the lost tool report.

Bug Fix! Scrapped Tool Report

Fixed a bug with the scrapped tool report.

Bug Fix! Rework Operation Definitions

Fixed a redraw bug when deleting all attachments within rework operation definitions.

For more information

For the latest information on Predator Tool Crib, check our web site at

<http://www.shopfloorautomations.com>