



Predator MDC™ v7.0 – What's New

Latest features and benefits in v7.0

Before Installing v7.0

Predator MDC v7.0 requires Windows 2000, XP or 2003 Server. Existing customers that have older versions of Windows such as Windows 95, 98, ME or NT v4.0 must upgrade prior to installing v7.0 of Predator MDC.

Existing MDC customers should backup the database prior to upgrading. Predator MDC Administrator v7.0 will upgrade the database automatically from older v1.x, v2.x or v3.x versions to v7.0. After the database has been upgrade to v7.0 older versions of Predator MDC will not be able to use the database.

Microsoft Internet Explorer v5.x or later is required to be installed before installing Predator MDC v7.0.

Why v7.0?

By design, this release is intended to add new features, reports and to improve the ease of collecting data. In addition, with this release we are introducing a new shop floor version of Predator MDC called Predator MDC Shop Floor and a DOS version called Predator MDC for DOS. Details of what's new are explained throughout this document and within the online help.

© 1994 – 2006 Predator Software Inc. All rights reserved.

THIS IS A LIVING DOCUMENT. The information contained in this document represents the current view of Predator Software Inc. on the issues discussed as of the date of publication. Because Predator Software Inc. must respond to changing market conditions, it should not be interpreted to be a commitment on the part of Predator Software Inc., and Predator Software Inc. cannot guarantee the accuracy of any information presented after the date of publication.

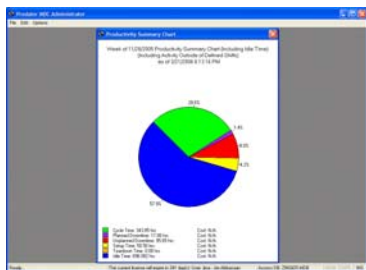
Installing v7.0

A new Install Wizard has been developed for v7. It is based on a single .MSI image and .CAB files have been eliminated. In addition, the Predator MDC Service has been added to the standard installation. If you are running Windows 98, ME or NT v4.0 you must upgrade to Windows 2000, XP or 2003 Server prior to installing v7.0 of Predator MDC.

NOTE: The stand alone installation of the Predator MDC Service has been eliminated.

By default installation occurs in the \program files\predator software\mdc 7.0 directory. If you were previously running v3.x we recommend uninstalling v3.x prior to installing v7.0.

Predator MDC



Network Installations of v7.0

By committing to store the product installation on a server, users will enjoy automatic healing of all critical files upon running Predator MDC. For example, suppose a user accidentally deletes pmdc.exe. Under normal circumstances he would be down and the software would fail to run. With v7.0 when the user double clicks the desktop shortcut all critical files are checked and if necessary restored from the network server and the software begins to run automatically.

The easiest way to perform a network installation is to step through the following:

1. Copy the contents of the CD to a \\predator cd images\CD21\ or similar directory.
2. Run the setupmdc.exe from the CD21 directory.

NOTE: Should any automatic healing be necessary, Predator MDC will be able to automatically extract the necessary files from the appropriate cab files stored in the CD21 directory. If you install from a CD, Predator MDC will be forced to prompt for the CD.

What's New in v7.0?

Improved! HTML based Online Help

Updated online help expands several topics with new details.

New! Floating Network Licensing Option

v7.0 of Predator MDC supports a new floating network licensing option. This option eliminates the need to manage a Predator SIM for each PC and to purchase a license for each PC. Only a single SIM is required at the Predator FLM (Floating Network Manager) PC and only the number of simultaneous licenses in use needs to be purchased. There is a minimum of three licenses.

New! Microsoft SQL Server 2005 Support

Support for Microsoft SQL Server 2005 has been added with v7.0 of Predator MDC.

New! Microsoft SQL Server 2005 Express Support

Support for Microsoft SQL Server 2005 Express has been added with v7.0 of Predator MDC. Support for this edition of SQL Server provides a free version of Microsoft SQL Server for small and medium manufacturers. The Express edition can be downloaded from Microsoft's web site.

New! Access 2003 Support

Support for Access 2003 has been added with v7.0 of Predator MDC.

New! Oracle Database 10g Support

Support for Oracle Database 10g has been added with v7.0 of Predator MDC.

New! Oracle Database 10g Express Support

Support for Oracle Database 10g Express has been added with v7.0 of Predator MDC. Support for this edition of Oracle provides a free version of the Oracle Database for small and medium manufacturers. The Express edition can be downloaded from Oracle's web site.

New! Bar Code Label Printing

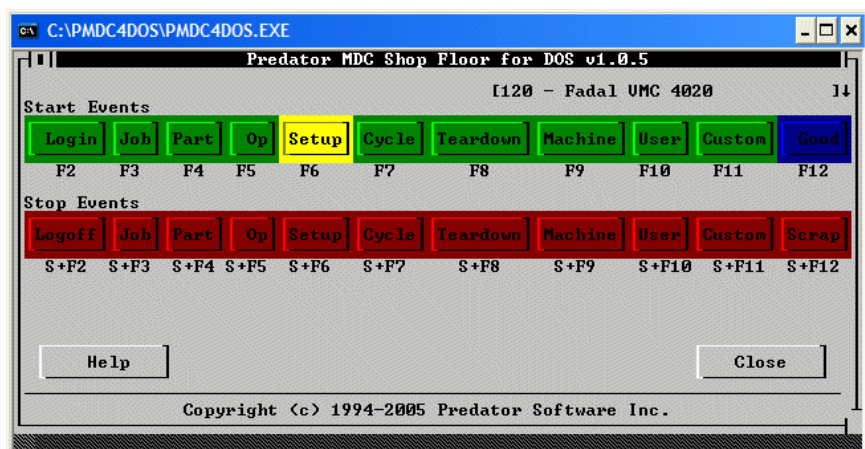
Getting organized is now even easier with direct bar code label printing of jobs, parts, operations, machines and users. Support for Dymo label printers have been added to v7.0 of Predator MDC. Multiple bar code labels or a single bar code label can be printed with no wasted labels. Within the bar code label itself either the component number or the asset number can be selected. These bar code labels can be applied to existing shop floor reports and paperwork which may be simpler than changing the original system.

New! Asset Numbers

Automatic unique asset numbers have been added to all major components within v7.0 of Predator MDC. Component number must be unique within a specific component but they can be duplicated across components. For example, Predator MDC supports a part number of 1200 and it also allows a job number of 1200 to be defined. Often a unique asset number can simplify managing all of the components within Predator MDC and the other applications within Predator SFC. Assets numbers are used to address this issue and are automatically managed and maintained by Predator MDC and the other applications within Predator SFC.

New! Predator MDC Shop Floor for DOS

DOS based CNC controls by their nature and age can be difficult to collect data so Predator MDC Shop Floor for DOS provides an option for manual data collection. Predator MDC Shop Floor for DOS provides a similar New Event interface method with RS232 outputs. The DOS user interface is very similar to the Windows user interface. Predator MDC Shop Floor for DOS supports multiple keyboard layouts and mouse support. Predator MDC Shop Floor for DOS is designed to be used with the standard Predator MDC Objects. Customization of Predator MDC Shop Floor for DOS can be accomplished by editing one or more text files. Complete documentation is available via the included PDF file.



NOTE: Predator MDC for DOS is licensed per site.

New! –EVENTS Command Line Option

A new command line option –events has been added to run Predator MDC in a New Event only mode. This mode allows Predator MDC to be easily integrated within other applications. For example, within the Predator CNC Editor a new custom menu can be added with the following command line:

```
pmdc.exe –events
```

In this mode only the dialog is operational there is no application framework. The –events command line option is available within all MDC licenses.

New! –BP Command Line Option

A new command line option –bp has been added to run the Predator MDC Service in the background to process data. By default the Predator MDC application does not run the Predator MDC Service. This is the opposite of what used to happen in the previous version. This also means that the –NOBP command line option that used to exist in the previous version has been eliminated. The –BP command line option is typically used by VARs during demos or for end users that are evaluating the software. In both cases running the Predator MDC Service as a service is not desired. For example, create a new desktop shortcut with the following command line:

```
pmdc.exe –bp
```

New! Assign Shifts to Machines

A new option has been added to v7.0 to allow specific machines to be assigned to specific shifts. For example, the benefits of this new option is to allow some machines to be run via three eight hour shifts and other machines to be run via two ten hour shifts. Should this be desired then a total of five shifts need to be defined with each machine being assigned two of the five or three of the five. By default all machines use all shifts. When shift definitions overlap the assigned shifts to machine preferences provide resolution.

New! Assign Machines to Users or User Groups

A new option has been added to v7.0 to allow specific machines to be assigned to users or user groups. The benefit of this new option is to restrict certain machines to specific users within the New Event dialog. By default all machines are available to all users and groups.

New! Assign Machines to PCs

A new option has been added to v7.0 to allow specific machines to be assigned to specific PCs. The benefit of this new option is to restrict certain machines to specific PCs within the New Event dialog. By default all machines are available to all PCs.

New! End User License Agreement

Predator MDC v7.0 is bound by a new end user license agreement that provides more details, rights and responsibilities of all parties including PSI, Predator VARs and end users.

New! External Edits via Predator CNC Editor Report

A new security report has been added to when users of the Predator CNC Editor Enterprise edition add/change the database.

New! Remote Desktop Support

Predator MDC has been improved to support Remote Desktop within Windows. This allows for the SIM to be plugged into one PC (server) while another PC (client) starts a remote desktop session and runs Predator MDC off the server without having to install Predator MDC on the client PC.

NOTE: This is different than a Floating Network Licensing implementation.

New! Right Mouse Menus within Views

Two additional right mouse menus have been added to the major components to print bar code labels. For example, select View Parts and then right click on an appropriate part number to see the additional Bar Code label shortcut menus.

New! MDC Send Objects

Three new MDC Send Objects, one for each database, have been added. These new objects allow automatic data collection for job time, part time, operation time and setup time for CNC machines during the Send to CNC command. These new objects can be combined with the MDC Dripfeed objects as well.

New! MDC Receive Objects

Three new MDC Receive Objects, one for each database have been added. These new objects allow automatic data collection for job time, part time, operation time, good parts and scrap parts for CNC machines during the Receive from CNC command. These new objects can be combined with Remote Autaname/Remote Start commands as well.

Improved! Machine Status

Predator MDC v7.0 improves the machine status by limiting the refresh rate to a minimum of five seconds to insure that the database server does not get overloaded.

Improved! New Event

Predator MDC v7.0 adds a user configurable refresh rate to the new event dialog.

Improved! Upgrade Dialog

Predator MDC v7.0 improves the upgrading and licensing process by including a SIM ID button that will check to see if a Predator SIM is plugged in locally or via Remote Desktop. In addition a license type pulldown has been added to improve the startup performance.

Improved! Command Summary Report

Within Predator MDC v7.0 the command summary report has been improved with an additional parameter column. The parameter column displays the parts, jobs downtime reasons, etc.

Improved! Machine Events Report

Within Predator MDC v7.0 the machine events report has been improved with an additional parameter column. The parameter column displays the parts, jobs, downtime reasons, etc.

Improved! History by User Report

Within Predator MDC v7.0 the history by user report has been improved to support the Predator CNC Editor.

Improved! History by Application Report

Within Predator MDC v7.0 the history by application report has been improved to support the Predator CNC Editor.

Improved! Microsoft SQL Performance

Predator MDC v7.0 improves the performance of almost all processes, wizards, reports, charts and API calls with Microsoft SQL Server. This allows Predator MDC to support more simultaneous users of MDC and the other applications within Predator SFC and reduces the requirements for SQL Server.

Improved! Zinger Manufacturing

The sample company Zinger Manufacturing has been updated to take advantage of some of the new v7.0 features.

For the latest on Predator MDC, check our web site at
<http://www.predator-software.com>