



Predator MDC™ v2.0 – What's New

Latest features and benefits in v2.0

Before Installing v2.0

Existing Predator MDC administrators must read the MDC Upgrade to 2.0 from v1.3 document before installing v2.0. There are few changes and your local Predator reseller should be consulted prior to upgrading.

Microsoft Internet Explorer v5.5 or later is required to be installed before installing Predator MDC v2.0. If Predator DNC or Desktop will be used with MDC v2.0 then v5.0 of Predator DNC or Desktop is required.

Backup everything; especially your Oracle space or Access MDB file. Running Predator MDC Administrator v2.0 will upgrade the data from v1.3 to v2.0 automatically and it will no longer be compatible with v1.3. Predator MDC will always upgrade the data forward but not backwards.

Why v2.0?

By design, this release was intended to address customer requests for new features. Details of the new features are explained throughout this document and within the online help.

Installing v2.0

By default, installation occurs in the \program files\predator software\mdc 2.0\ directory. If you were running v1.3 simply proceed with the installation normally. If you were running a beta version of 2.0, please un-install it prior to installing v2.0. Predator MDC Administrator v2.0 will upgrade your data from v1.3 or any 2.0 beta to the final release automatically. If upgrading fails, confirm that read only flag is not set on the MDB file.

NOTE: Windows NT v4.0 service pack 4 or greater is required to be installed prior to installing Predator MDC v2.0

NOTE: Should installation fail, manual installation of the major components can be performed by reviewing the setupmdc.ini file and launching each component.

© 1994 – 2003 Predator Software Inc. All rights reserved.

THIS IS A LIVING DOCUMENT. The information contained in this document represents the current view of Predator Software Inc. on the issues discussed as of the date of publication. Because Predator Software Inc. must respond to changing market conditions, it should not be interpreted to be a commitment on the part of Predator Software Inc., and Predator Software Inc. cannot guarantee the accuracy of any information presented after the date of publication.

Network Installations of v2.0

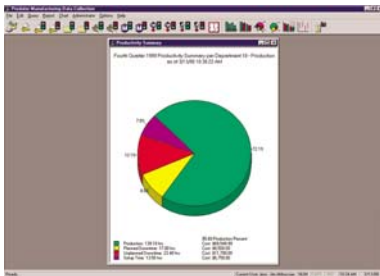
By committing to store the product installation on a server, users will enjoy automatic healing of all critical files upon running Predator MDC. For example, a user accidentally deletes pmdc.exe. Under normal circumstances he would be down and the software would fail to run. With v2.0, when the user double clicks the desktop shortcut, all critical files are checked and if necessary restored from the network server and the software begins to run automatically.

To perform a network installation is to step through the following:

1. Copy the contents of the entire CD to a \predator cd\ or similar directory.
2. Run the setuppmdc.exe from the \predator cd\ directory.

NOTE: Should any automatic healing be necessary, Predator MDC will be able to automatically extract the necessary files from the appropriate cab files stored in the \predator cd\ directory. If you install from an actual CD, Predator MDC will be forced to prompt for the CD.

Predator MDC



What's New in v2.0?

Improved! HTML based Online Help

Updated HTML based, context sensitive, online help details the new features and changes made in v2.0 of Predator MDC. Refer to the What's New section for v2.0 specifics.

Improved! View Machine Status

The view machine status has been improved with support for operations and status time.

Status	Machine	User	Part	Job	Downtime Code
Cycling	10 - Fadal 4020B	jma - Jim Abbassian	Zd-11-02 - Z Series Driver	-	-
Idle	11 - Haas VF-650	-	-	-	-
Idle	12 - Mori Seiki SVD-503	-	Zd-13-05 - Bullet Driver Series	10-1235 - 50 Widgets for HP	-
In Setup	14 - Bridgeport VMC 1500	-	-	-	-
In Setup	15 - Okuma Crown-E	-	-	-	-
Down	16 - Citizen CINCROM L32	-	-	-	115 - Fixture Problem
Idle	17 - Hardinge T42	-	-	-	-
Idle	18 - SuperMax TC-26	richardr - Richard Runnels	-	-	-
Down	33 - Mori Seiki SL50	-	-	-	120 - Preventive M

New! Operation Tracking

Predator MDC can now track operations. Individual operation tracking along with operation time is supported. Operation tracking is optional and not required. All report and chart dialogs have been updated to support filtering by a specific operation.

New! Scrap Tracking

Predator MDC can now track scrap. An unlimited number of scrap reasons along with

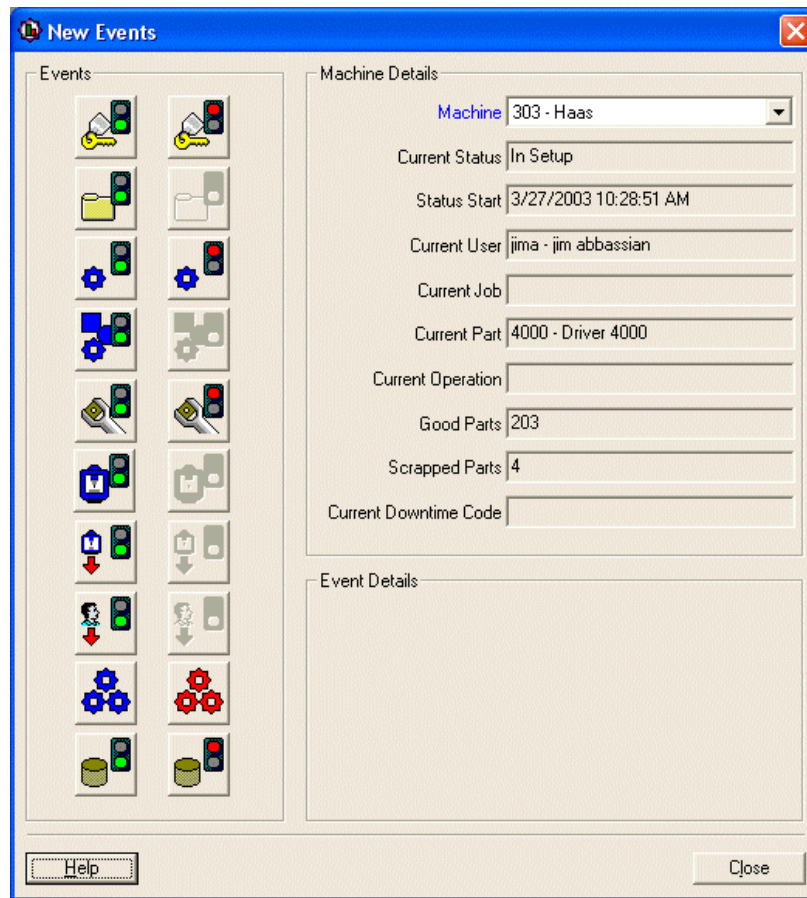
tracking specific scrap quantities is supported. Tracking scrap is optional and not required.

New! Scrap Code Summary Chart

A new scrap code summary chart has been added to graph scrap reasons. This pie chart graphs the total time per scrap reason. This chart supports a complete set of filtering to drill down to specific departments, locations, groups, machines, part types, parts, machinists, operations, jobs and shifts in any combination.

New! Scrap Code Summary Report

A new scrap code summary report has been added for scrap reasons. This report details the total time per scrap reason. This report supports a complete set of filtering to drill down to specific departments, locations, groups, machines, part types, parts, machinists, operations, jobs and shifts in any combination.



New! PC-Based Real-Time Data Collection

A new dialog has been designed for PC based real-time data collection. This single data entry screen also provides real-time status and feedback. In addition it supports switching from one machine to another to allow a single PC per cell implementations.

New! Automatic Part Start/Stop

A new option to automatically start and stop part numbers based on a job start and stop has been added. When enabled this option will automatically track the first part number within a job. This option should not be enabled if multiple parts per job are utilized.

NOTE: For most manufacturers one part number per job number is typical. By enabling this option it simplifies the data collection process for tracking both job numbers and part numbers.

New! Parts per Job Summary Report

A new parts per job summary report has been added for to track work-in-process. This report details the parts and there status within a specific job.

New! International Date and Time Support

The entire application has been re-tooled to support international date formats.

New! Predator MDC SDK

Predator MDC now includes a comprehensive SDK or software development kit with over 250 API calls. This SDK allows Predator Software or third parties to develop integrations with ERP, MRP, accounting or CAD/CAM applications. The SDK can also be used to add additional customer specific functionality to Predator MDC. Extensive online help is provided detailing each API call along with usage examples in Microsoft C++ and Visual Basic.

New! Custom Menus

Up to four custom menus can be added to Predator MDC. Commands for creating new custom menus, editing existing custom menus and executing the custom menus have been added. Each custom menu can execute any Predator or third party application.

Improved! MDC Objects

MDC Objects used within Predator DNC or Desktop have been improved to support operations, scrap reasons and international date formats.

NOTE: These new MDC objects will not require changes to existing bar code labels, CNC programs or other data collection methods if upgrading from Predator MDC v1.3.

Improved! New Components

Creating new components within Predator MDC has been improved with a true wizard based process with integrated history. Duplicate components are identified within the wizard making it easier to perform data entry.

NOTE: Updated components include departments, locations, groups, machines, part types, part numbers, jobs, customers, shifts, vendors, commands, downtime reasons, and scrap reasons.

Improved! Edit Components

Editing existing components within Predator MDC has been improved with a true wizard based process with integrated history. Duplicate components are identified within the wizard making it easier to perform data entry.

NOTE: Updated components include departments, locations, groups, machines, part types, part numbers, jobs, customers, shifts, vendors, commands, downtime reasons, and scrap reasons.

Improved! Release Job to shop Floor

The release job to shop floor command has been improved with a true wizard based

process with integrated history.

Improved! Finish Job

The finish job command has been improved with a true wizard based process with integrated history.

Improved! Assign Permissions

The assign permissions command has been improved with a true wizard based process with integrated history.

Improved! Assign Users to Users Group

The assign users to users group command has been improved with a true wizard based process with integrated history.

Bug Fix! Delete Collected Data

Fixed a bug with the delete collected command so it will work in every case.

Improved! Predator Travelers Compatible

Predator MDC v2.0 is compatible with Predator Travelers v2.0 and both products can utilize the identical database.

Improved! Predator Tool Crib Compatible

Predator MDC v2.0 is compatible with Predator Tool Crib v2.0 and both products can utilize the identical database.

Improved! Predator Gage Crib Compatible

Predator MDC v2.0 is compatible with Predator Gage Crib v2.0 and both products can utilize the identical database.

For more information

For the latest information on Predator MDC, check our web site at
<http://www.predator-software.com>