



Predator Gage Crib™ v1.3 – What's New

Latest features and benefits in v1.3

Before Installing v1.3

Existing Predator Gage Crib administrators must read the Gage Crib Upgrade to 1.3 from v1.2 document before installing v1.3. There are several major changes and your local Predator reseller should be consulted prior to upgrading.

Microsoft Internet Explorer v5.5 or later is required to be installed before installing Predator Gage Crib v1.3.

Backup everything; especially your Oracle space. Running v1.3 will upgrade the data from v1.2 to v1.3 automatically after the upgrade it will no longer be compatible with v1.2. Predator Gage Crib will always upgrade the data forward but not backwards.

NOTE: v1.3 does not support Windows 95, existing users must upgrade to a newer Windows version.

Why v1.3?

By design, this release was intended to add support for Microsoft SQL Server. Along the way several new features have been added. Details of the new features are explained throughout this document and the new online help file.

Installing v1.3

One of the biggest changes is a new installation based on Microsoft's Install Services. This technology was introduced in Windows 2000. If you are running Windows 98 or NT v4.0, and Microsoft's Install Services has never been installed, v1.3 will do this automatically at the very beginning. This will require a re-boot prior to completing the installation of Predator Gage Crib.

NOTE: Windows NT v4.0 service pack 4 or greater is required to be installed prior to installing Predator Gage Crib v1.3

By default, installation occurs in the \program files\predator software\gage crib 1.3\ directory. If you were running v1.2 simply proceed with the installation normally. If you were running a beta version of 1.3, please un-install it prior to installing v1.3. Gage Crib Administrator v1.3 will upgrade your data from v1.2 or any 1.3 beta to the final release

© 1994 – 2002 Predator Software Inc. All rights reserved.

THIS IS A LIVING DOCUMENT. The information contained in this document represents the current view of Predator Software Inc. on the issues discussed as of the date of publication. Because Predator Software Inc. must respond to changing market conditions, it should not be interpreted to be a commitment on the part of Predator Software Inc., and Predator Software Inc. cannot guarantee the accuracy of any information presented after the date of publication.

automatically. If upgrading fails, confirm that read only flag is not set on the MDB file.

With this release we have dropped supporting floppy drive or diskette based installs. All installations must be performed from a CD, CDR, CDRW or DVD drive.

Network Installations of v1.3

Another major installation improvement has been made with network installations. By committing to store the product installation on a server, users will enjoy automatic healing of all critical files upon running Predator Gage Crib. For example, a user accidentally deletes PGage.exe. Under normal circumstances they would be down and the software would fail to run. With v1.3, when the user double clicks the desktop shortcut, all critical files are checked and if necessary restored from the network server and the software begins to run automatically.

To perform a network installation is to step through the following:

1. Copy the contents of the entire CD to a \predator cd\ or similar directory.
2. Run the setupgagecrib.exe from the \predator cd\ directory.

NOTE: Should any automatic healing be necessary, Predator Gage Crib will be able to automatically extract the necessary files from the appropriate cab files stored in the \predator cd\ directory. If you install from an actual CD, Predator Gage Crib will be forced to prompt for the CD.

What's New in v1.3?

New! Microsoft SQL Server Support

Support for Microsoft SQL Server has been added throughout Predator Gage Crib. In addition, demo mode can also support SQL Server.

New! Independent Quality Testing

V1.3 of Predator Gage Crib was tested by an independent consulting company prior to its release. This additional level of product testing and certification has been made to insure the highest product quality standards have been reached by Predator Gage Crib.

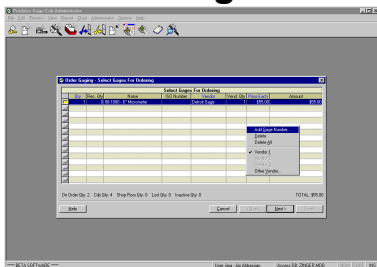
Improved! HTML based Online Help

Updated HTML based, context sensitive, online help details the new features and changes made in v1.3 of Predator Gage Crib. Refer to the What's New section for v1.3 specifics. Finally, we improved F1 style context sensitive help to works within all reports.

Improved! Installation

An improved installation and uninstall process is now included with Predator Gage Crib v1.3. Redundant installation options are automatically skipped with new software detection methods. Finally, the uninstall process for Predator Gage Crib has been improved so that it does not disturb other Predator applications.

Predator Gage Crib

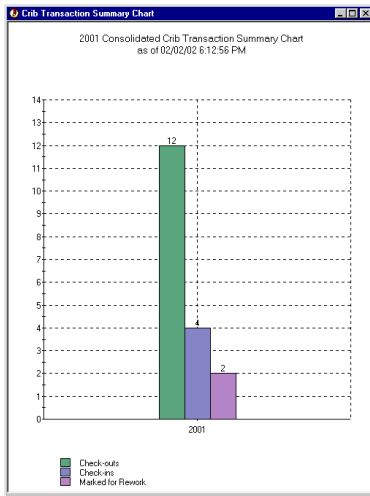


Improved! Gage and Part Number Formatting

Gage and part number formatting is now optional and can be disabled or enabled. To disable number formatting simply delete the format string within the format string dialog box.

Improved! Calibration Queue

The calibration queue has been improved to support changes to a gage's calibration information when there are gages in the calibration queue. In addition, a calibration button has been added to the calibration queue dialog. Finally, when performing an actual calibration a return to the queue option has been added.



New! Calibration Summary Chart

A new calibration summary chart has been added. This bar chart graphs pending and completed calibrations per day, week, month, quarter or year. This chart supports drilling down along with several other options.

New! Crib Transaction Summary Chart

A new crib transaction summary chart has been added. This bar chart graphs check outs, check ins, and mark for reworks per day, week, month, quarter or year. This chart supports drilling down along with several other options.

New! IRR Summary Chart

A new IRR summary chart has been added. This bar chart graphs open IRRs, quantity scrapped, quantity calibrated, and quantity of conditional use per day, week, month, quarter or year. This chart supports drilling down along with several other options.

New! Purchase Order Summary Chart

A new purchase order summary chart has been added. This bar chart graphs issued POs vs. received POs per day, week, month, quarter or year. This chart supports drilling down along with several other options.

New! Lost vs. Found Chart

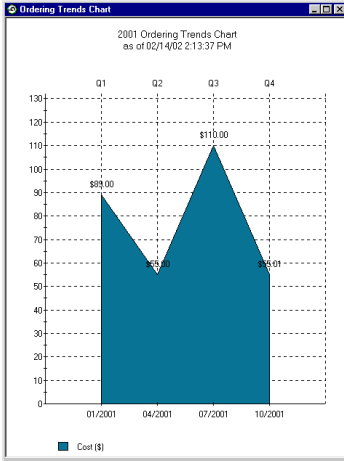
A new lost vs. found chart has been added for gages. This bar chart graphs lost vs. found quantities per day, week, month, quarter or year. This chart supports drilling down to types and sub-types along with several other options.

New! Active vs. Inactive Chart

A new active vs. inactive chart has been added for gages. This bar chart graphs active vs. inactive quantities per day, week, month, quarter or year. This chart supports drilling down to types and sub-types along with several other options.

New! Gage Inventory Charts

Three new gage inventory charts have been added for gage types, sub types and numbers. This bar chart graphs gaging costs or quantities per type, sub type or number. This chart supports several filtering options for the crib, the shop floor or for all gages.



New! Vendor Purchases Chart

A new vendor purchases chart has been added. This bar chart graphs purchase amounts per vendor within any date range. This chart supports drilling down to a specific vendor.

New! Ordering Trends Chart

A new ordering trends chart has been added for gages. This area chart graphs costs or quantities per day, week, month, quarter or year. This chart supports drilling down to types and sub-types along with several other options.

New! Consumption Trends Chart

A new consumption trends chart has been added for gages. This area chart graphs costs or quantities per day, week, month, quarter or year. This chart supports drilling down to types and sub-types along with several other options.

New! Periodic Calibration Trends Chart

A new periodic calibration chart has been added for gages. This plot chart graphs the actual dimension values for the last four calibrations.

New! Crib Location Toolbar button

A new crib location toolbar button has been added.

New! Predator Virtual CNC Compatible

Predator Gage Crib is now compatible with Predator Virtual CNC. A new Predator Virtual Viewer is now included with Predator Gage Crib. This allows any CNC verification or machine simulation created with Predator Virtual CNC to be viewed within Predator Gage Crib. This can be done with any View Components or Calibration Work Instructions.

Improved! Reference Attachments

Adding, editing and deleting reference attachments to gage types, sub types, numbers and every other component has been improved with an all new wizard.

Improved! Resume Calibration Queue

The resume calibration queue has been improved to support returning a gage to the calibration queue.

Improved! Check In

The check in wizard has been improved with an option to mark a gauge for calibration during the check in process.

Improved! Add Existing Gage

The add existing gage wizard has been improved with an option to set a default crib location during the data entry process.

Improved! Order New Gages

The order new gages gage wizard has been improved with an option to create new vendors during the ordering process.



Improved! Assign Permissions Dialog

Green and Red color coding has been added to the assign permissions dialog. Green indicates that the user/group has permission for a particular item and Red indicates that permission has been disabled.

Improved! Permissions Report

Green and Red color coding has been added to the permissions report. Green indicates that the user/group has permission for a particular item and Red indicates that permission has been disabled. In addition, A bug has been fixed so the permissions report can now be printed.

Improved! Edit Reference Dimension Labels

The edit reference dimension labels wizard has been improved with two new buttons for adding and deleting.

Improved! Report Dialogs

Every report has been improved to automatically return to the appropriate dialog box if the query does not return any data.

Improved! Upgrading process

The upgrading process has been improved by displaying the database version numbers within the confirmation upgrade dialog box prior to actually upgrading the database.

Improved! Error Messages

Every error message for inputting numeric fields has been improved to better convey the nature of the error and how to fix the error.

Improved! Predator MDC Compatibility

Predator Gage Crib v1.3 is compatible with Predator MDC v1.3 and both products can utilize the identical database.

Improved! Predator Tool Crib Compatibility

Predator Gage Crib v1.3 is compatible with Predator Tool Crib v1.3 and both products can utilize the identical database.

Improved! Predator Travelers Compatible

Predator Gage Crib v1.3 is compatible with Predator Travelers v1.3 and both products can utilize the identical database.

Improved! Zinger Example Database

Updated Zinger example database for v1.3 of Predator Gage Crib.

Bug Fix! Serial List Report

Fixed a bug when printing the gage serial list report.

Bug Fix! Lost Gage Report

Fixed a bug with the lost gage report.

Bug Fix! Scrapped Gage Report

Fixed a bug with the scrapped gage report.

Bug Fix! Calibration Operation Definitions

Fixed a redraw bug when deleting all attachments within the calibration operation definition screen.

For more information

For the latest information on Predator Gage Crib, check our web site at <http://www.predator-software.com>