



Predator CNC Editor™ v7.0 – What's New

Latest features and benefits in v7.0

Before Installing v7.0

Predator CNC Editor v7.0 requires Windows 2000, XP or 2003 Server. Existing customers that have older versions of Windows such as Windows 95, 98, ME or NT v4.0 must upgrade prior to installing v7.0 of Predator CNC Editor.

Microsoft Internet Explorer v5.x or later is required to be installed before installing Predator CNC Editor v7.0.

Why v7.0?

By design, this release is intended to introduce a new enterprise version of Predator CNC Editor called Predator CNC Editor Enterprise. Details of what's new are explained throughout this document and within the online help.

Installing v7.0

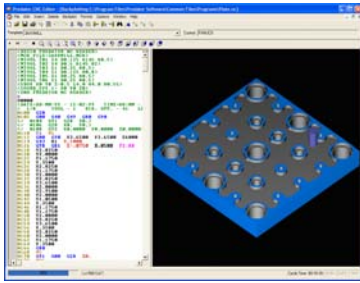
A new Install Wizard has been developed for v7. It is based on a single .MSI image and .CAB files have been eliminated. If you are running Windows 98, ME or NT v4.0 you must upgrade to Windows 2000, XP or 2003 Server prior to installing v7.0 of Predator CNC Editor.

By default installation occurs in the \program files\predator software\editor 7.0 directory. If you were previously running v6.x we recommend uninstalling v6.x prior to installing v7.0.

© 1994 – 2006 Predator Software Inc. All rights reserved.

THIS IS A LIVING DOCUMENT. The information contained in this document represents the current view of Predator Software Inc. on the issues discussed as of the date of publication. Because Predator Software Inc. must respond to changing market conditions, it should not be interpreted to be a commitment on the part of Predator Software Inc., and Predator Software Inc. cannot guarantee the accuracy of any information presented after the date of publication.

Predator CNC Editor



Network Installations of v7.0

By committing to store the product installation on a server, users will enjoy automatic healing of all critical files upon running Predator CNC Editor. For example, suppose a user accidentally deletes peditor.exe. Under normal circumstances he would be down and the software would fail to run. With v7.0 when the user double clicks the desktop shortcut all critical files are checked and if necessary restored from the network server and the software begins to run automatically.

The easiest way to perform a network installation is to step through the following:

1. Copy the contents of the CD to a \predator cd images\CD21\ or similar directory.
2. Run the setupeditor.exe from the CD21 directory.

NOTE: Should any automatic healing be necessary, Predator CNC Editor will be able to automatically extract the necessary files from the appropriate cab files stored in the CD21 directory. If you install from a CD, Predator CNC Editor will be forced to prompt for the CD.

What's New in v7.0?

Improved! HTML based Online Help

Updated online help expands several topics with new details.

New! Floating Network Licensing Option

v7.0 of Predator CNC Editor supports a new floating network licensing option. This option eliminates the need to manage a Predator SIM for each PC and to purchase a license for each PC. Only a single SIM is required at the Predator FLM (Floating Network Manager) PC and only the number of simultaneous licenses in use needs to be purchased. There is a minimum of three licenses.

New! Microsoft SQL Server 2000 Support

Support for Microsoft SQL Server 2000 has been added with v7.0 of Predator CNC Editor Enterprise.

New! Microsoft SQL Server 2005 Support

Support for Microsoft SQL Server 2005 has been added with v7.0 of Predator CNC Editor Enterprise.

New! Microsoft SQL Server 2005 Express Support

Support for Microsoft SQL Server 2005 Express has been added with v7.0 of Predator CNC Editor Enterprise. Support for this edition of SQL Server provides a free version of Microsoft SQL Server for small and medium manufacturers. The Express edition can be downloaded from Microsoft's web site.

New! Access 2003 Support

Support for Access 2003 has been added with v7.0 of Predator CNC Editor.

New! Oracle Database 8g Support

Support for Oracle Database 8g has been added with v7.0 of Predator CNC Editor Enterprise.

New! Oracle Database 9g Support

Support for Oracle Database 9g has been added with v7.0 of Predator CNC Editor Enterprise.

New! Oracle Database 10g Support

Support for Oracle Database 10g has been added with v7.0 of Predator CNC Editor Enterprise.

New! Oracle Database 10g Express Support

Support for Oracle Database 10g Express has been added with v7.0 of Predator CNC Editor Enterprise. Support for this edition of Oracle provides a free version of the Oracle Database for small and medium manufacturers. The Express edition can be downloaded from Oracle's web site.

New! Predator CNC Editor Enterprise

v7.0 adds a new enterprise edition of Predator CNC Editor called Predator CNC Editor Enterprise. The enterprise version leverages the SFC database and provides an Administrator edition and a Client edition. Support for users, user groups, permissions, shifts, departments, locations and reporting is fully supported. The Enterprise edition shares full compatibility with v7 Predator MDC, Predator Tracker and Predator Travelers. The Enterprise edition includes support for all templates within the SFC database and eliminates peditor.mdb.

NOTE: By design the –properties command line option within v6 has been eliminated and all administrative features and menus are available in v7 within the Administrator license of Predator CNC Editor Enterprise.

New! Create Shifts

Creating new shifts and shift intervals has been added to v7.0 of Predator CNC Editor Enterprise.

New! Create Departments

Creating new departments have been added to v7.0 of Predator CNC Editor Enterprise.

New! Create Locations

Creating new locations have been added to v7.0 of Predator CNC Editor Enterprise.

New! Create Users

Creating new users have been added to v7.0 of Predator CNC Editor Enterprise.

New! Create User Groups

Creating new user groups have been added to v7.0 of Predator CNC Editor Enterprise.

New! LogOff

Within v7.0 of Predator CNC Editor Enterprise a new LogOff option has been added to the File menu to allow the current user to logoff and a new user to logon. A LogOff toolbar button has also been added.

New! Edit Shifts

Editing existing shifts and shift intervals has been added to v7.0 of Predator CNC Editor Enterprise.

New! Edit Departments

Editing existing departments have been added to v7.0 of Predator CNC Editor Enterprise.

New! Edit Locations

Editing existing locations have been added to v7.0 of Predator CNC Editor Enterprise.

New! Edit Users

Editing existing users have been added to v7.0 of Predator CNC Editor Enterprise.

New! Edit User Groups

Editing existing user groups have been added to v7.0 of Predator CNC Editor Enterprise.

New! Change Password

Editing the user password has has been added to v7.0 of Predator CNC Editor Enterprise.

New! View Departments

Viewing departments have been added to v7.0 of Predator CNC Editor Enterprise.

New! View Locations

Viewing locations have been added to v7.0 of Predator CNC Editor Enterprise.

New! View Users

Viewing users have been added to v7.0 of Predator CNC Editor Enterprise.

New! View User Groups

Viewing locations have been added to v7.0 of Predator CNC Editor Enterprise.

New! Shift Report

A new shift report has been added to v7.0 of Predator CNC Editor Enterprise.

New! Department Report

A new department report has been added to v7.0 of Predator CNC Editor Enterprise.

New! Location Report

A new location report has been added to v7.0 of Predator CNC Editor Enterprise.

New! User Report

A new user report has been added to v7.0 of Predator CNC Editor Enterprise.

New! User Group Report

A new user group report has been added to v7.0 of Predator CNC Editor Enterprise.

New! Shift History Report

A new shift history report has been added to v7.0 of Predator CNC Editor Enterprise.

New! Shift Interval History Report

A new shift interval history report has been added to v7.0 of Predator CNC Editor Enterprise.

New! Department History Report

A new department history report has been added to v7.0 of Predator CNC Editor Enterprise.

New! Location History Report

A new location history report has been added to v7.0 of Predator CNC Editor Enterprise.

New! User Groups per User Report

A new user groups per user report has been added to v7.0 of Predator CNC Editor Enterprise.

New! History by User Report

A new history by user report has been added to v7.0 of Predator CNC Editor Enterprise.

New! History by Application Report

A new history by application report has been added to v7.0 of Predator CNC Editor Enterprise.

New! Permissions Report

A new permissions report has been added to v7.0 of Predator CNC Editor Enterprise.

New! Failed Logon Report

A new failed logon report has been added to v7.0 of Predator CNC Editor Enterprise.

New! Purged Items Reports

Four new purged item reports have been added to v7.0 of Predator CNC Editor Enterprise.

New! External Edit Reports

Three new external edit reports have been added to v7.0 of Predator CNC Editor Enterprise.

New! Assign Permissions Wizard

A new assign permissions wizard has been added to v7.0 of Predator CNC Editor Enterprise.

New! Assign Users to User Groups Wizard

A new assign users to user groups wizard has been added to v7.0 of Predator CNC Editor Enterprise.

New! Administrator Options Wizard

A new administrator options wizard has been added to v7.0 of Predator CNC Editor Enterprise. Options include assigning a default directory, exclude extensions, save as, pathname display, compare option for automatic file delete, and automatic backup copies.

New! End User License Agreement

Predator CNC Editor v7.0 is bound by a new end user license agreement that provides more details, rights and responsibilities of all parties including PSI, Predator VARs and end users.

New! Asset Numbers

Automatic unique asset numbers have been added to all major components within v7.0 of Predator CNC Editor Enterprise. Component number must be unique within a specific component but they can be duplicated across components. Often a unique asset number can simplify managing all of the components within Predator CNC Editor Enterprise and the other applications within Predator SFC. Assets numbers are used to address this issue and are automatically managed and maintained by Predator CNC Editor Enterprise and the other applications within Predator SFC.

New! Remote Desktop Support

Predator Travelers has been improved to support Remote Desktop within Windows. This allows for the SIM to be plugged into one PC (server) while another PC (client) starts a remote desktop session and runs Predator Travelers off the server without having to install Predator Travelers on the client PC.

NOTE: This is different than a Floating Network Licensing implementation.

New! Microsoft SQL Performance

Predator CNC Editor Enterprise v7.0 improves the performance of almost all wizards and reports with Microsoft SQL Server. This allows Predator CNC Editor Enterprise to support more simultaneous users of the CNC Editor and the other applications within Predator SFC and reduces the requirements for SQL Server.

Improved! Dripfeeding Large Files

Support for very large files, greater than 30 megs, has been added to v7.0 of the Predator CNC Editor. During the testing process a 75 meg file was successfully transferred.

Improved! Upgrade Dialog

Predator CNC Editor v7.0 improves the upgrading and licensing process by including a SIM ID button that will check to see if a Predator SIM is plugged in locally and also via Remote Desktop. In addition a license type pulldown has been added to improve the startup performance.

Improved! Zinger Manufacturing

The sample company Zinger Manufacturing has been updated to take advantage of some of the new v7.0 features.

For the latest on Predator CNC Editor, check our web site at <http://www.predator-software.com>